

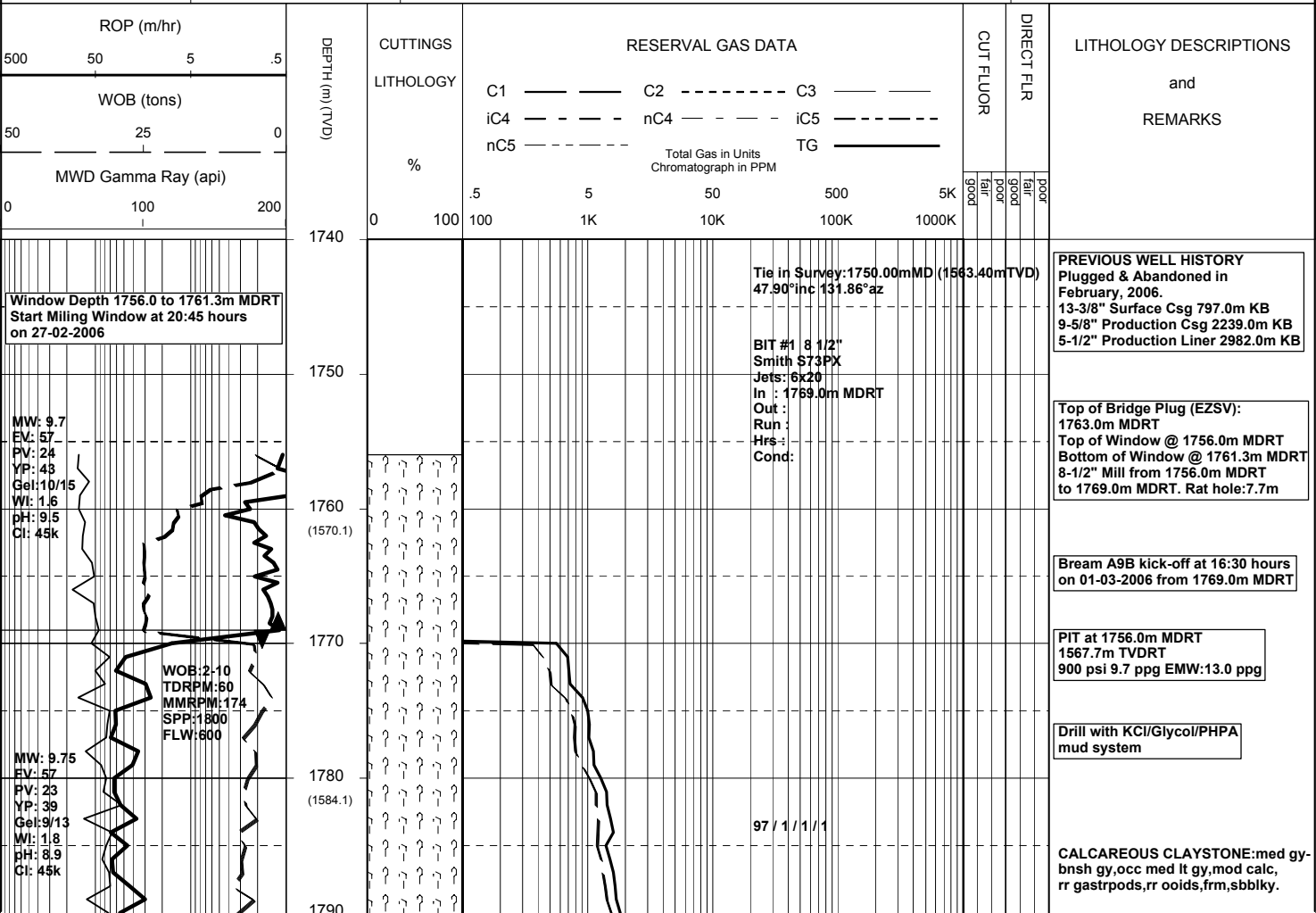
MASTERLOG

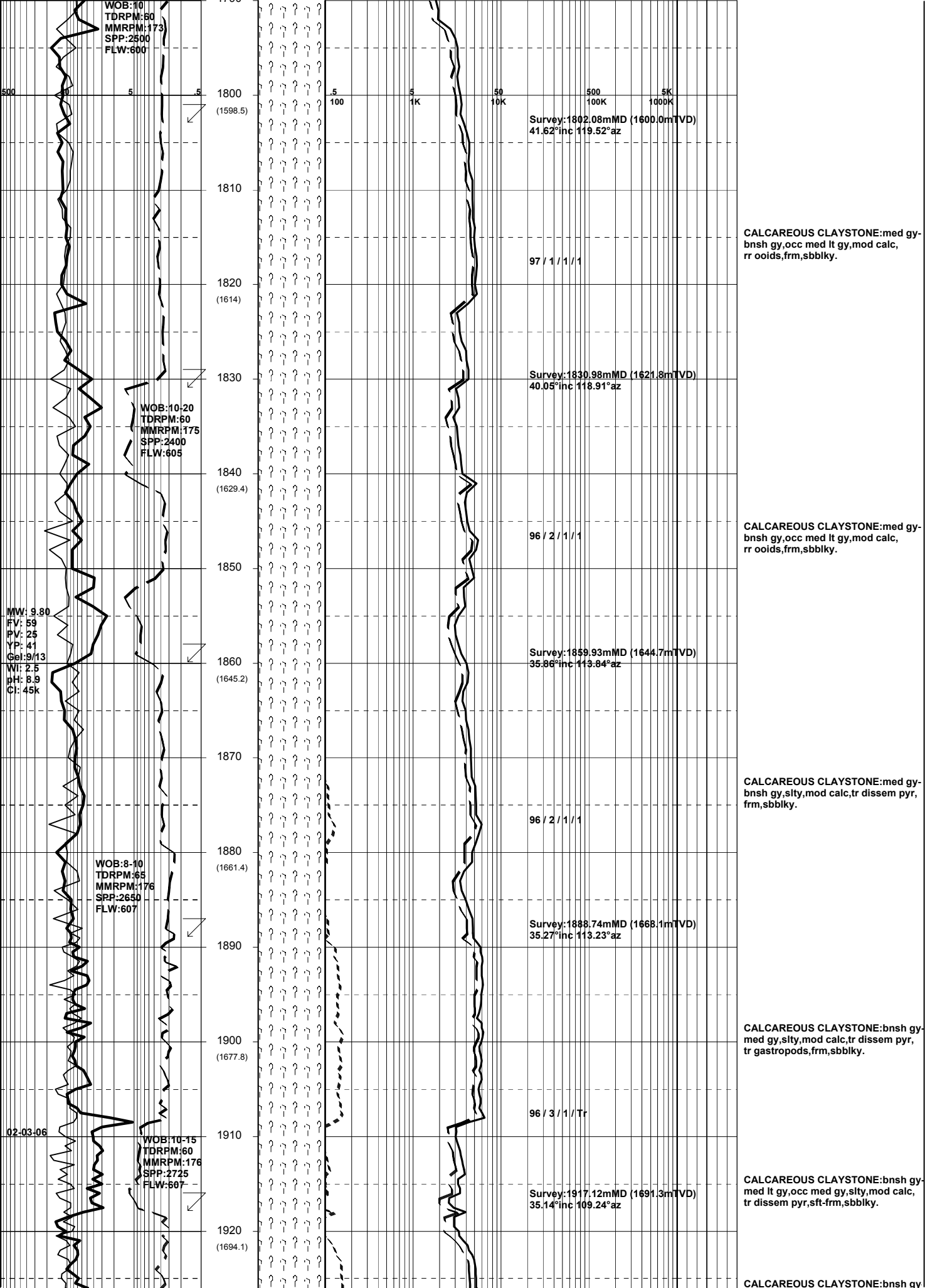
BMA A9B



GENERAL	POSITION	HOLE / CASING INFO	DATE / DEPTH	ENGINEERS
Country : AUSTRALIA	GDA Co-ord X : 147 46 20.685E	8-1/2" Hole to	Kick Off Date : 01-03-2006	Noel Elliott
Permit : VIC L13	GDA Co-ord Y : 38 29 58.800S		Total Depth Date :	Mark Smith
Field : Bream	MGA Co-ord X : 567353.50mE	13-3/8" Surface Csg at 797.0m MDRT	Total Depth :	
Basin : GIPPSLAND	MGA Co-ord Y : 5738460.92mN	9-5/8" Whipstock at 1756.0m MDRT	True Vertical Depth :	
Well Type : DEVELOPMENT	RT to MSL : 32.82m	7" Production Csg at	Log Scale : 1/ 500	
Rig Name : NABORS 453	RT to Sea Bed : 92.22m			

ABBREVIATIONS	LITHOLOGY LEGEND	ENGINEERING LEGEND
MW Mud Weight WOB Weight on Bit (klbs) RV Funnel Viscosity RPM Rotations Per Min PV Plastic Viscosity FLW Flow Rate (gpm) YP Yield Point SPP Pump Pressure (psi) Gel Gel Strength RR Re-Run Bit WL Water Loss TG Trip Gas KCI Potassium Chloride CG Connection Gas Cl Chlorides BG Background Gas Incl Inclination DGP Drilled Gas Peak Az Azimuth MM Mud Motor	CLAYSTONE MARL BRYOZOA CARB FRAGMENT SILTSTONE LIMESTONE RADIOLARITES QUARTZITE SST: F - V FINE DOLOMITE ECHINOIDS INTRUSIVES SST: MEDIUM CHERT CORALS GLAUCONITE SST: COARSE CONGLOMERATE FORAMINIFERA PYRITE SHALE COAL LITHIC FRAGMENT CEMENT	CASING SHOE WIRELINE LOGS LINER HANGER MDT POINTS: PRESSURE ONLY SAMPLE SEAL FAILURE TIGHT CORE BIT CHANGE DEVIA. SURVEY SWC UNRECOV SIDEWALL CORE





WOB:10
TDRPM:60
MMRPM:173
SPP:2500
FLW:600

WOB:10:20
TDRPM:60
MMRPM:175
SPP:2400
FLW:605

WOB:8-10
TDRPM:65
MMRPM:176
SPP:2650
FLW:607

WOB:10-15
TDRPM:60
MMRPM:176
SPP:2725
FLW:607

MW: 9.80
FV: 59
PV: 25
YP: 41
Gel: 9/13
WI: 2.5
pH: 8.9
CI: 45k

02-03-06

1800 (1598.5)
1810
1820 (1614)
1830
1840 (1629.4)
1850
1860 (1645.2)
1870
1880 (1661.4)
1890
1900 (1677.8)
1910
1920 (1694.1)

5 5 50 500 5K
100 1K 10K 100K 1000K

Survey:1802.08mMD (1600.0mTVD)
41.62°inc 119.52°az

Survey:1830.98mMD (1621.8mTVD)
40.05°inc 118.91°az

Survey:1859.93mMD (1644.7mTVD)
35.86°inc 113.84°az

Survey:1888.74mMD (1668.1mTVD)
35.27°inc 113.23°az

Survey:1917.12mMD (1691.3mTVD)
35.14°inc 109.24°az

CALCAREOUS CLAYSTONE: med gy-bnsh gy, occ med lt gy, mod calc, rr ooids, frm, sbblyk.

CALCAREOUS CLAYSTONE: med gy-bnsh gy, occ med lt gy, mod calc, rr ooids, frm, sbblyk.

CALCAREOUS CLAYSTONE: med gy-bnsh gy, stly, mod calc, tr disse pyr, frm, sbblyk.

CALCAREOUS CLAYSTONE: bnsh gy-med gy, stly, mod calc, tr disse pyr, frm, sbblyk.

CALCAREOUS CLAYSTONE: bnsh gy-med lt gy, occ med gy, stly, mod calc, tr disse pyr, sft-frm, sbblyk.

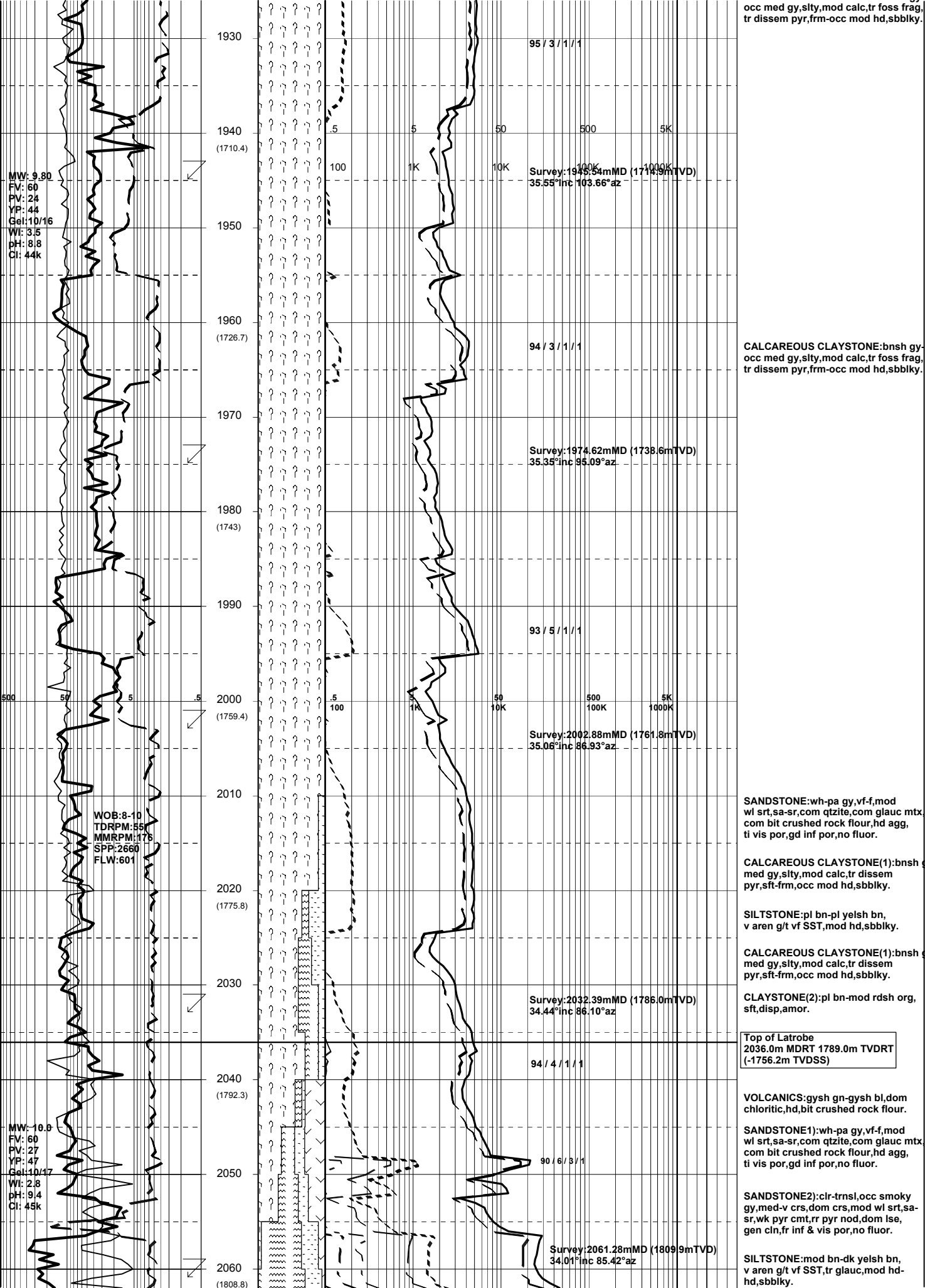
CALCAREOUS CLAYSTONE: bnsh g

97 / 1 / 1 / 1

96 / 2 / 1 / 1

96 / 2 / 1 / 1

96 / 3 / 1 / Tr



MW: 9.80
 FV: 60
 PV: 24
 YP: 44
 Gel: 10/16
 WI: 3.5
 pH: 8.8
 Cl: 44k

WOB-8-10
 TDRPM: 55
 MMRPM: 176
 SPP: 2660
 FLW: 601

MW-10.8
 FV: 60
 PV: 27
 YP: 47
 Gel: 10/17
 WI: 2.8
 pH: 9.4
 Cl: 45k

1930
 1940 (1710.4)
 1950
 1960 (1726.7)
 1970
 1980 (1743)
 1990
 2000 (1759.4)
 2010
 2020 (1775.8)
 2030
 2040 (1792.3)
 2050
 2060 (1808.8)

95 / 3 / 1 / 1

5 5 50 500 5K
 100 1K 10K 100K 1000K
 Survey: 1945.54mMD (1714.9mTVD)
 35.55°inc 103.66°az

94 / 3 / 1 / 1

Survey: 1974.62mMD (1738.6mTVD)
 35.35°inc 95.09°az

93 / 5 / 1 / 1

5 5 50 500 5K
 100 1K 10K 100K 1000K
 Survey: 2002.88mMD (1761.8mTVD)
 35.06°inc 86.93°az

Survey: 2032.39mMD (1786.0mTVD)
 34.44°inc 86.10°az

94 / 4 / 1 / 1

90 / 6 / 3 / 1

Survey: 2061.28mMD (1809.9mTVD)
 34.01°inc 85.42°az

occ med gy, slty, mod calc, tr foss frag, tr dissem pyr, frm-occ mod hd, sbbkly.

CALCAREOUS CLAYSTONE(1): bnsh med gy, slty, mod calc, tr foss frag, tr dissem pyr, frm-occ mod hd, sbbkly.

SANDSTONE: wh-pa gy, vf-f, mod wl srt, sa-sr, com qtzite, com glauc mtx, com bit crushed rock flour, hd agg, ti vis por, gd inf por, no flour.

CALCAREOUS CLAYSTONE(1): bnsh med gy, slty, mod calc, tr dissem pyr, sft-frm, occ mod hd, sbbkly.

SILTSTONE: pl bn-pl yelsh bn, v aren g/t vf SST, mod hd, sbbkly.

CALCAREOUS CLAYSTONE(1): bnsh med gy, slty, mod calc, tr dissem pyr, sft-frm, occ mod hd, sbbkly.

CLAYSTONE(2): pl bn-mod rdsh org, sft, disp, amor.

Top of Latrobe
 2036.0m MDRT 1789.0m TVDRT
 (-1756.2m TVDSS)

VOLCANICS: gysh gn-gysh bl, dom chloritic, hd, bit crushed rock flour.

SANDSTONE(1): wh-pa gy, vf-f, mod wl srt, sa-sr, com qtzite, com glauc mtx, com bit crushed rock flour, hd agg, ti vis por, gd inf por, no flour.

SANDSTONE(2): clr-trnsl, occ smoky gy, med-v crs, dom crs, mod wl srt, sa-sr, wk pyr cmt, rr pyr nod, dom lse, gen cln, fr inf & vis por, no flour.

SILTSTONE: mod bn-dk yelsh bn, v aren g/t vf SST, tr glauc, mod hd, sbbkly.

